



CO₂ POWERED ENERGY MAX 1.3J
Muzzle Velocity 100m/s (328FPS)

BLE-XAE
Black Leopard Eye Xtreme Ambi Enhanced
Patent Acquired: EU-003765049-0001 / TW-D187677 / US D830480

Please read the [Instruction Manual] carefully and make full understanding of the details noted in the contents before use.

WARNING

- To avoid damaging the product, please release the gas from the magazines or cartridges while not operating.
- Sales and usage are restricted to 18-year-old people or older. Those below 18 years old are not allowed neither to purchase nor to operate alone.
- Never aim or shoot at people or animals. Please beware of childrens' mis-handling.
- Please read and fully understand all details listed in this instruction manual before using this air gun. You can download it from www.icsbb.com if you lose this instruction manual.



1 PART DESCRIPTION

WARNING-ATTENTION

This model is featured with Gas-Blow-Back function. The slide will be pushed back and forth by the gas pressure strongly and rapidly while firing. To prevent injury, please keep your face and finger away from the slide.

- The pistol could be damaged when using at temperature of 30°C (86°F) or above.

2 SAFETY DEVICE

Safety ON
Please engage the safety while not operating.

Safety OFF
Disengage the safety when you are going to fire.

3 LOADING MAGAZINE

WARNING-ATTENTION

- To prevent misfiring, keep your finger off the trigger and out of the trigger guard while loading the magazine.
- For safety reason, please remove the magazine while not operating.

Load the magazine until it clicks into the locking position.
Do not insert the magazine by force.

Release the magazine by pressing the magazine catch button.
Hold the magazine when releasing it from the pistol grip to prevent it from dropping.

4 CO2 CARTRIDGE INSTALLATION

- Remove the magazine buttpad.
- Use the Allen key to loosen the fixing screw.
- Insert the cartridge into the magazine.
Warning! Do not throw it into the magazine to avoid the danger.
- Fasten the cartridge fixing screw.
Warning! The magazine has a decompression hole, do not aim at the eyes when you rotate the fixing screw.
- Install the magazine buttpad then ready to use.

WARNING-ATTENTION

To avoid the overheating of the cartridges, the cartridges should be stored in cool, dry place and away from the heat source, which must below 31°C, in case the inflation of volume and generate high-pressure gas due to temperature uprising of the content liquid CO₂, which will deal greater pressure to the cartridges, and lead to the risk of explosion.

5 LOADING BBs

- Leave no gap between BBs
- Do not release the magazine follower abruptly while pressing the follower. Releasing the follower carelessly may damage the magazine lip.

Pull the magazine follower down to the end, insert BBs into the BB slot.
Maxumun 24 rounds

You may insert the last BB through the magazine lip.
Do not attempt to insert more than 24 BBs.

6 LOADING

- Insert the magazine.
- Pull the slide to the end and hold (the hammer will be pressed down).
- Release the slide (the slide is held at the back at the moment).
- Press the slide catch downward, the slide will be pushed forward (a BB pellet will be loaded into the barrel).

WARNING-ATTENTION

- Keep your face and fingers away from the slide while the slide is operating.
- When the pistol is unloaded, the slide can be pushed forward when you pull and release it from the end.
- When the pistol is loaded, loading repeatedly will makes the BBs load into the barrel repeatedly, which will lead to malfunction while firing and cause danger.
- When the hammer is pressed down, pulling the trigger will fire the BB. Please take extra notice.

7 SHOOTING

- Switch the safety to FIRE.
- Load the pistol according to step 6.
- Pull the trigger to fire (a BB pellet will be fired and the slide will be pushed backward).

The slide will be blown back and forth when firing.

WARNING-ATTENTION

- Power Depression
When the temperature inside the magazine is too low, the gas power will be depressed.
- The movement of the slide will be delayed.
- The slide catch will not be bounced.
- The shooting range will not be far.

To prevent misfiring, keep your finger off the trigger and out of the trigger guard when you are not ready to fire.

When the BB is loaded into the barrel, the following process will be proceeded and repeat automatically everytime you pull the trigger:
BB fired → Slide movement (blowed backward) → Load the next BB (slide re-positioned)

ATTENTION

- The rails on the slide is very sharp. Please keep your face and fingers away from the slide while the slide is operating.
- Please keep your finger off the trigger and out of the trigger guard, and take extra caution to where the gun is aiming while proceeding non-firing operations.

Shooting posture
Please do not operate the pistol up side down for optium performance.

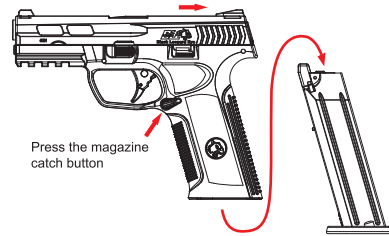
8 STORAGE

- Press the magazine catch button to release the magazine.
- Make sure the inner barrel is clear. If not, pull the slide backward, and turn the pistol up side down to remove the remaining BB, make sure no BBs are left inside the barrel. (push the BB pellet out from the barrel by the clearing rod is recommended).
- Press the slide catch lever to release the slide.
- Pull the trigger and fire several times towards safety directions, and make sure no BBs are left inside the barrel.

9 DISASSEMBLY (Do it when necessary)

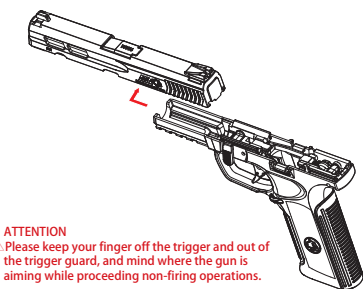
Only disassemble your airsoft replica when adjusting the H-UP and proceeding to maintenance.

- Press the magazine catch button to unload the magazine.
- Pull and hold the slide to the end.



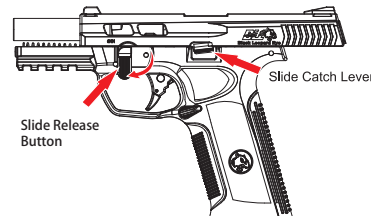
Press the magazine catch button

- Push the slide forward to remove.



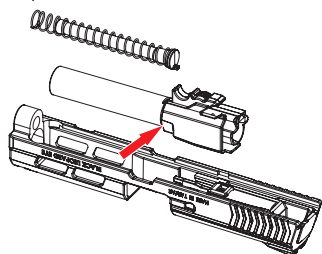
ATTENTION
Please keep your finger off the trigger and out of the trigger guard, and mind where the gun is aiming while proceeding non-firing operations.

- Push the slide catch lever upward to hold the slide at the rear.
- Turn the slide release button downward to head 6 O'clock direction, hold your slide with your hand then press the slide catch lever.



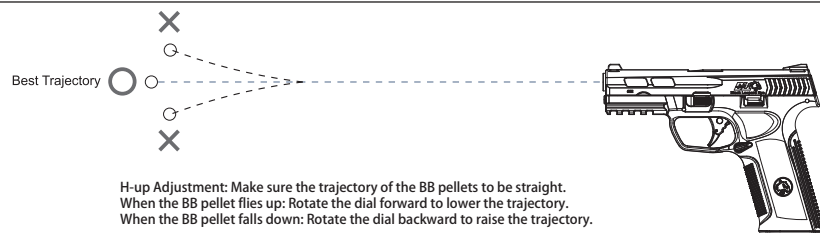
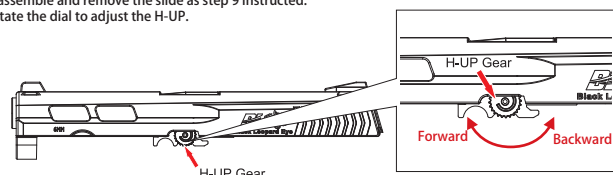
Slide Release Button

- Push the recoil spring guide forward to detach from the slide, then remove it upward.
- Slightly push the outer barrel assembly forward, and then remove it upward.



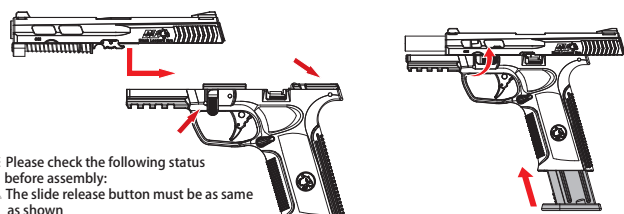
10 H-UP ADJUSTMENT

- Please disassemble and remove the slide as step 9 instructed.
- Slightly rotate the dial to adjust the H-UP.



H-up Adjustment: Make sure the trajectory of the BB pellets to be straight. When the BB pellet flies up: Rotate the dial forward to lower the trajectory. When the BB pellet falls down: Rotate the dial backward to raise the trajectory.

11 ASSEMBLY



※ Please check the following status before assembly:
△ The slide release button must be as same as shown
△ The hammer must be down pressed.

- Insert the slide back to the receiver through the rail from the front.
- Push and hold the slide to the end.
- Turn the slide release button back to its horizontal position, then release the slide.
- Load an empty magazine.

WARNING-ATTENTION

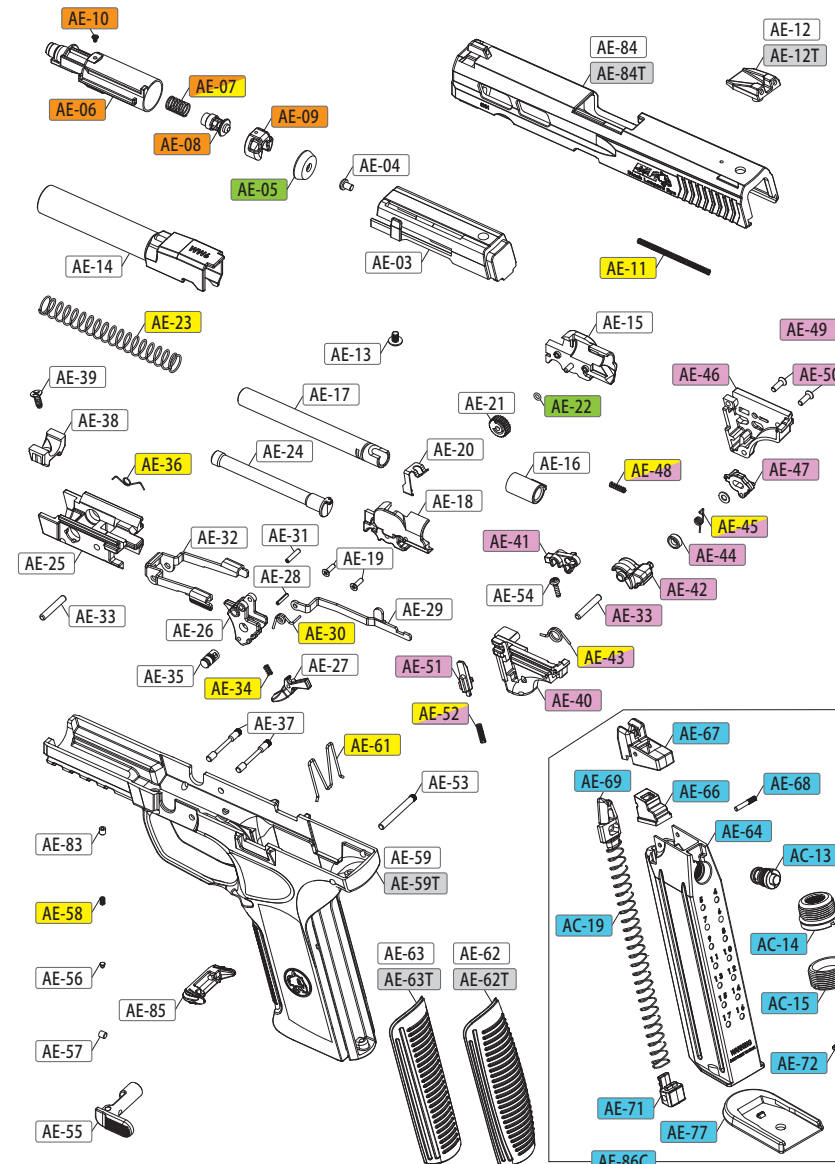
ICS will not be responsible for any part assembling errors, missing parts, and problems such as malfunctions, accidents, injuries, caused by malfunction, and all the maintaining expenses will be beared by the customer themselves.

12 BASIC TROUBLESHOOTING GUIDE

SYMPTOMS	POSSIBLE CAUSE	SOLUTIONS
No response	The safety is ON. (No firing)	Switch the safety to "OFF". (refer to step 2)
	Insufficient gas in the cartridge	Replace a new cartridge after confirming the cartridge is empty (refer to step 7, item 4 and step 4)
CO2 comes out from the barrel	Temperature is too low. (during the winter)	Reheat the cartridge to room temperature.
	Cartridge over-pressured	It will return normal after firing several times.
BBs fly up	H-UP is over adjusted.	Adjust the H-UP screw clockwise. (refer to step 9)
Shooting range is too short	H-UP is not enough.	Adjust the H-UP screw counter-clockwise. (refer to step 9)
	Foreign matters or oil in the inner barrel.	Clean the inner barrel and H-UP bucking.
BBs roll out of barrel	Cartridge over-pressured.	It will return normal after firing several times.
	H-UP is not enough.	Adjust the H-UP screw counter-clockwise. (refer to step 9)
Jammed	H-UP is over adjusted.	Adjust the H-UP screw clockwise. (refer to step 9)
	Bad BBs, oversize BBs	0.2g to 0.25g 6mm caliber BBs are recommended for optimum performance.
Trigger cannot be pulled.	Foreign matters or oil in the inner barrel.	Clean the inner barrel.
	BBs or foreign matters jam inside the case.	Take out the BBs or foreign matters.
CO2 leaking from perforated seat	Bad installation of the cartridge	Replace a new cartridge after confirming the cartridge is empty.(refer to step 7, item 4 and step 4)
	Not enough silicon oil for perforated seat .	Grease the perforated seat.
Magazine lip cannot hold the BBs.	Magazine lip abraded	Replace the Magazine lip.

13 PARTS DIAGRAM

*The components/accessories for each model may have kind of differences depending on the actual goods. Images are only for reference.



14 PARTS DESCRIPTION

ITEM#	DESCRIPTION	Q'TY	ITEM#	DESCRIPTION	Q'TY
AE-03	XAE Cylinder Housing	1	AE-45	XAE Knocker Spring	1
AE-04	M1 Screw	1	AE-46	XAE Hammer Housing-Right	1
AE-05	XAE Piston Ring	1	AE-47	XAE Hammer Disconnecter	1
AE-06	XAE Cylinder	1	AE-48	XAE Hammer Disconnecter Spring	1
AE-07	XAE Valve Spring	1	AE-49	Round Head Hammer Housing Screw	1
AE-08	XAE Valve	1	AE-50	Flat Head Hammer Housing Screw	2
AE-09	XAE Cylinder Cover	1	AE-51	XAE Hammer Disconnect Pin	1
AE-10	XAE Cylinder Housing Screw	1	AE-52	XAE Hammer Disconnect Pin Spring	1
AE-11	Cylinder Housing Spring	2	AE-53	XAE Hammer Housing Pin	1
AE-12	XAE Rear Sight	1	AE-54	Hammer Housing Screw	1
AE-12T	XAE Rear Sight-TAN	1	AE-55	XAE Slide Takedown Lever	1
AE-13	Rear Sight Screw	1	AE-56	XAE Slide Takedown Lever Button	1
AE-14	XAE Outer Barrel	1	AE-57	Slide Takedown Lever Screw	2
AE-15	XAE H-UP Chamber-Right	1	AE-58	XAE Slide Takedown Lever Spring	1
AE-16	XAE H-UP Bucking	1	AE-59	XAE Frame	1
AE-17	XAE Inner Barrel	1	AE-59T	XAE Frame-TAN	1
AE-18	XAE H-UP Chamber-Left	2	AE-61	XAE Magazine Catch Spring	1
AE-19	XAE H-UP Chamber Screw	1	AE-62	XAE Backstrap-Thick	1
AE-20	XAE H-UP Plate	1	AE-62T	XAE Backstrap-Thick-TAN	1
AE-21	H-UP Dial	1	AE-63	XAE Backstrap-Thin	1
AE-22	O-ring	1	AE-63T	XAE Backstrap-Thin-TAN	1
AE-23	XAE Recoil Spring	1	AE-64	XAE Magazine Case	1
AE-24	XAE Recoil Spring Guide	1	AE-66	XAE Magazine Nozzle Seal	1
AE-25	XAE Trigger Housing	1	AE-67	XAE Magazine Lip	1
AE-26	XAE Trigger	1	AE-68	XAE Magazine Lip Pin	1
AE-27	XAE Trigger safety	1	AE-69	XAE Magazine Follower	1
AE-28	Trigger Safety Pin	1	AE-71	XAE Magazine Base Plate Stop	1
AE-29	XAE Trigger Bar	1	AE-72	Magazine Base Plate Stop Pin	1
AE-30	XAE Trigger Bar Spring	1	AE-73	XAE Magazine Gas Tube and Base	1
AE-31	Trigger Bar Spring Pin	1	AE-77	XAE Magazine Base	1
AE-32	XAE Slide Catch Lever Plate	1	AE-78	XAE O-ring Pack	5
AE-33	Slide Catch Lever Plate Pin	2	AE-79	XAE Spring Pack	13
AE-34	XAE Trigger Spring	1	AE-80	XAE Cylinder Assembly	5
AE-35	XAE Trigger Safety Button	1	AE-82	XAE Hammer Combination	15
AE-36	XAE Slide Locking Plate Pin	1	AE-83	XAE Slide Disassemble Lever Screw-2	1
AE-37	V Trigger Housing Pin-Short	1	AE-84	XAE Slide and Dummy Extractor-BK Ver.2	1
AE-38	XAE Slide Positioning Block	1	AE-84T	XAE Slide and Dummy Extractor-TN Ver.2	1
AE-39	Slide Positioning Block Screw	1	AE-85	XAE Metal Magazine Catch	1
AE-40	XAE Hammer Housing-Left	1	AE-86C	XAE CO2 Magazine	1
AE-41	XAE Knocker	1	AC-13	CO2 Valve	1
AE-42	XAE Hammer	1	AC-14	CO2 Cylinder Perforated Seat	1
AE-43	XAE Hammer Spring	1	AC-15	CO2 Cylinder Housing Screw	1
AE-44	XAE Hammer Guide Wheel	1	AC-19	CO2 Magazine Spring-Short	1